



PSYCHOLOGICAL TESTING AND COUNSELING SERVICES

**ADMINISTRATIVE OFFICE OF THE CIRCUIT COURT
OF LAKE COUNTY, ILLINOIS**

DIVISION OF PSYCHOLOGICAL SERVICES

**SMAART Performance Management Report
January 2016**

ADMINISTRATIVE OFFICE OF THE CIRCUIT COURT OF LAKE COUNTY, ILLINOIS
DIVISION OF PSYCHOLOGICAL SERVICES

MISSION STATEMENT

The mission of the Circuit Court of Lake County is to serve the public. It accomplishes this mission by providing a fair and efficient system of justice, committed to excellence, fostering public trust, understanding and confidence.

The Division of Psychological Services supports the mission of the Court by providing diagnostic information and psychological services to the Court, consumers, and the public that ensures the independence and empowerment of the judicial system, the integrity and fairness of its decisions, and responsiveness to the needs of the community.

The goals of the Division of Psychological Services include the following:

- To provide accurate psychological evaluations and reports, expert testimony, sound professional recommendations, and other information as requested by the Court in order to assist in the fair and timely resolution of disputes presented before the justice system.
- To provide a comprehensive assessment process for criminal offenders and other Court consumers in order to facilitate timely, evidence-based interventions that are consistent with the correctional and rehabilitative needs of the individual, as well as the safety of the community.
- To provide evidence-based, psychological treatment services and interventions for adult and juvenile offenders, including family members and significant-others as appropriate, in order to reduce criminal recidivism, increase compliance with court orders, and improve overall psycho-social functioning.
- To facilitate continuing education programs regarding psychological, rehabilitative, correctional, and other resource issues to judges, Court staff, other justice system stakeholders, and community groups in order to improve service delivery throughout the justice system.

ADMINISTRATIVE OFFICE OF THE CIRCUIT COURT OF LAKE COUNTY, ILLINOIS
DIVISION OF PSYCHOLOGICAL SERVICES
PSYCHOLOGICAL TESTING AND COUNSELING SERVICES

PROGRAM DESCRIPTION

The Psychological Services Division provides a wide array of services to the Lake County Courts, Adult Probation Services, and Juvenile Probation & Detention Services. These services include conducting psychological evaluations, providing counseling to probationers, consulting with probation staff, and coordinating referrals to and monitoring service contracts with community social service providers.

Psychological Services conducts a range of assessments, including fitness to stand trial evaluations for the Courts, not guilty by reason of insanity evaluations, psychological evaluations of individuals undergoing pre-sentence and pre-plea investigations, and mental health evaluations of individuals on probation, including individuals being considered for Therapeutic Intensive Monitoring (T.I.M.) Court.

In addition, the division provides numerous counseling services, including individual counseling to both adult and juvenile probationers, family counseling services to juvenile probationers and their families, and group counseling. The division conducts anger management groups for adult and juvenile probationers, parenting groups for adult probationers and for the families of juvenile probationers, and assists adult probation staff in conducting Cognitive Outreach Groups (COG) groups and COG aftercare groups.

Current staffing of Psychological Services consists of five doctoral level psychologists, three master's level clinicians, two licensed clinical social workers, three community resource liaisons, and an executive assistant. The division offers a clinical psychology doctoral practicum training program for students in both therapy and diagnostic rotations. The Division also offers a social work internship program wherein interns assist with group, individual, and family counseling. Practicum students assist with the psychological testing workload and provide individual and group psychotherapy.

ADDITIONAL FEATURES

Psychological Services has three Community Resource Liaisons, two for Adult Probation Services and one for Juvenile Probation Services. These individuals maintain working relationships with community service providers and coordinate referrals for probationers in need of services. Psychological Services is responsible for overseeing a variety of contracts with community providers totaling just over \$1,000,000 for the evaluation and treatment of juvenile and adult probationers.

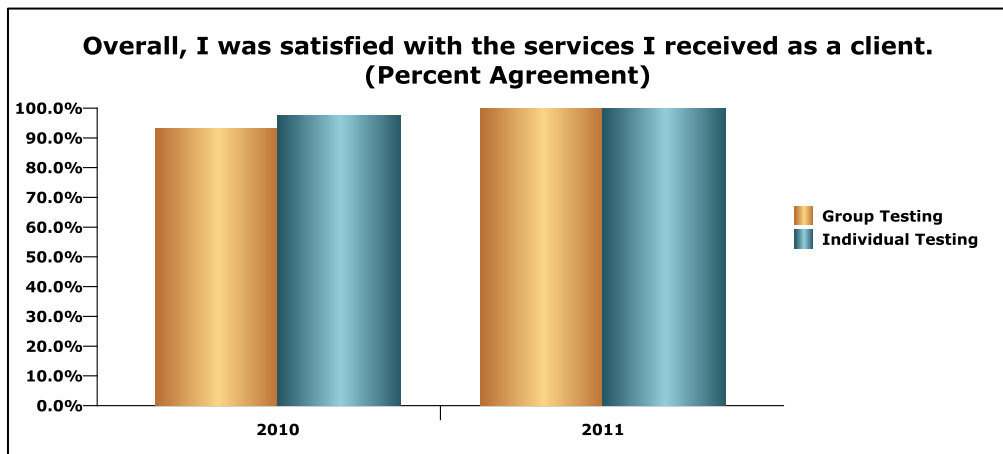
The staff of Psychological Services frequently provides consultation to probation staff about the mental health needs of probation clients. This includes assessment of suicide risk for probationers in crisis.

Psychological Services oversees the Juror Stress Program. Two of the Psychological Services Division's clinicians have undergone training in critical incident debriefing. These clinicians are available to conduct one-time individual or group debriefings for jurors who have been traumatized by their jury duty experience. Jurors in need of additional intervention will be referred to community service providers.

PERFORMANCE MEASURES

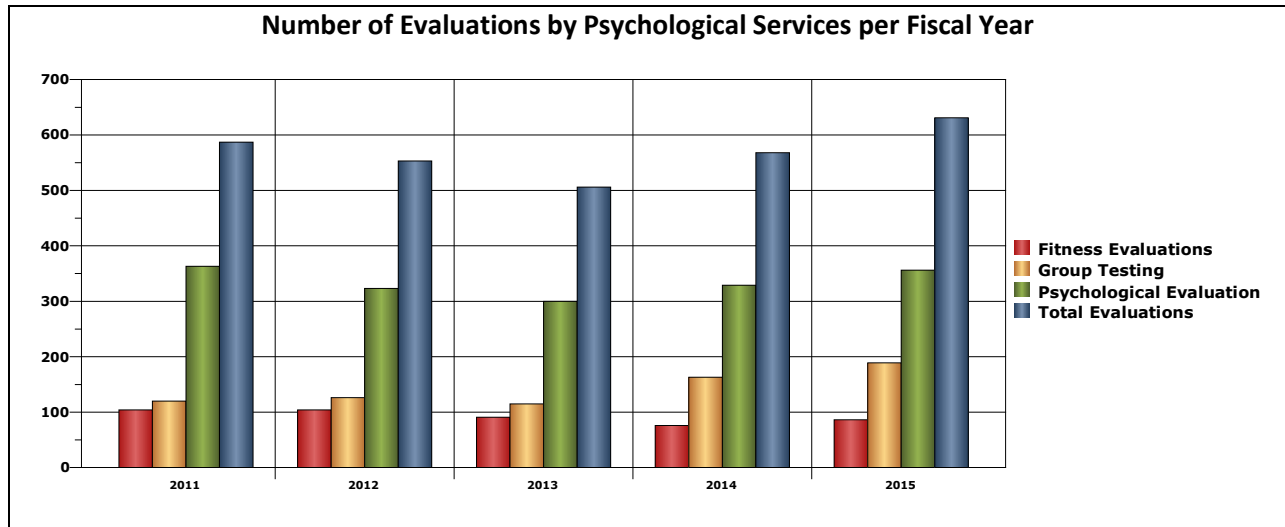
Group Testing

Clinicians that conduct psychological evaluations spend an average of four hours per individual conducting the clinical interview, psychological testing, scoring, and interpretation of test data. In order to reduce the cost of these psychological assessments in terms of both person hours and expediting the turnaround time of completed evaluations, group testing was initiated. Group testing utilizes one clinician to conduct the psychological testing, scoring, and interpretation of test data thus significantly reducing the number of person hours required if conducted individually. A client survey conducted in 2010-11 as part of the SMAART Client Services Survey Report revealed no difference in customer satisfaction between those individuals who took part in either individual or group testing. Group testing has enhanced the cost effectiveness of the service that the Division of Psychological Services provides to the 19th Judicial Circuit while continuing to offer the highest quality of diagnostic and treatment services to its clients.

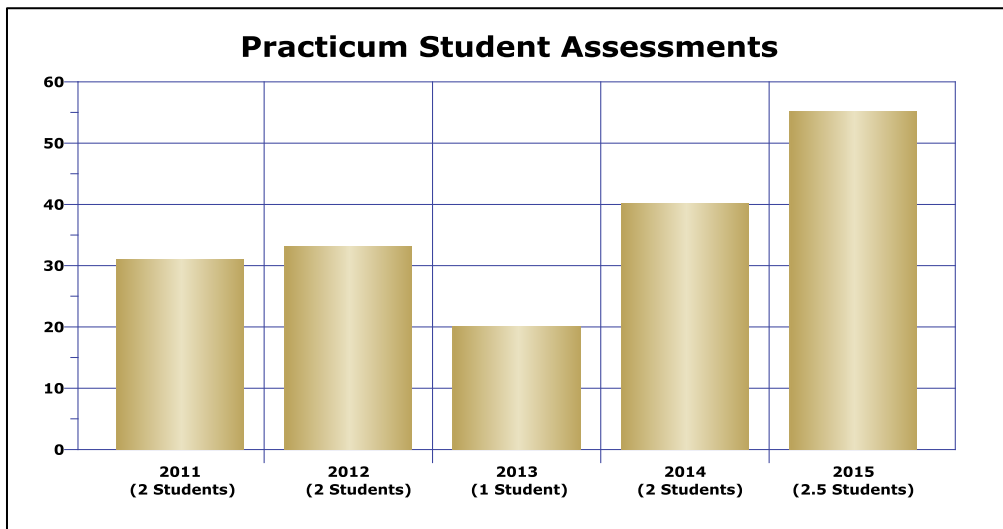


Psychological Evaluations

The Division of Psychological Services conducts hundreds of psychological evaluations per year generated by referrals received from the Court as well as the Divisions of Adult Probation and Juvenile Probation & Detention Services. These evaluations consist of fitness to stand trial and/or to plead evaluations, psychological evaluations for defendants undergoing presentence and pre-plea investigations, mental health evaluations of Probation clients and those being considered for the Therapeutic Intensive Monitoring (T.I.M.) Courts. Clinicians who conduct these evaluations include five licensed clinical psychologists and one master's level clinician.



Practicum students assist the Division by completing evaluations as part of their training. This is not a comparison to what clinicians do because the students are expected to provide a more extensive battery of tests in order to meet their training requirements.



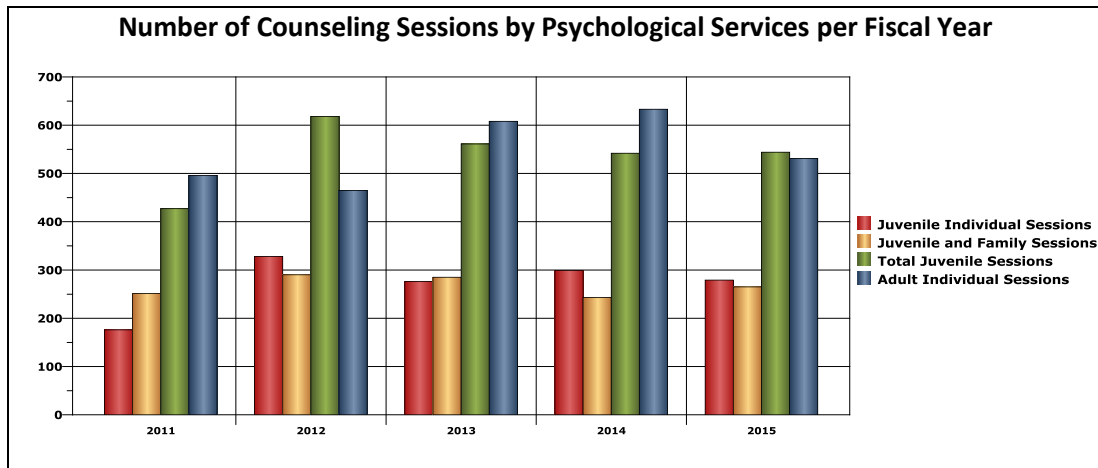
Juvenile Individual Therapy and Family Therapy

One of the Division's master's level mental health clinicians provides both individual therapy and family therapy to Juvenile Probation clients either referred by the Court or their Probation Officer. The clinician incorporates anger management training as needed with clients and their families. The clinician's fluency in Spanish is a valuable asset when working with juveniles and their families as a high percentage of the juvenile's parents are Spanish speaking.

Adult Individual Therapy

Individuals sentenced to Adult Probation and identified as in need or that would benefit from individual counseling have the opportunity to meet with a licensed clinical social worker from the

Division of Psychological Services at no cost to the Probationer. This clinician is available to the Probationer throughout their term of Probation.



Parenting Groups

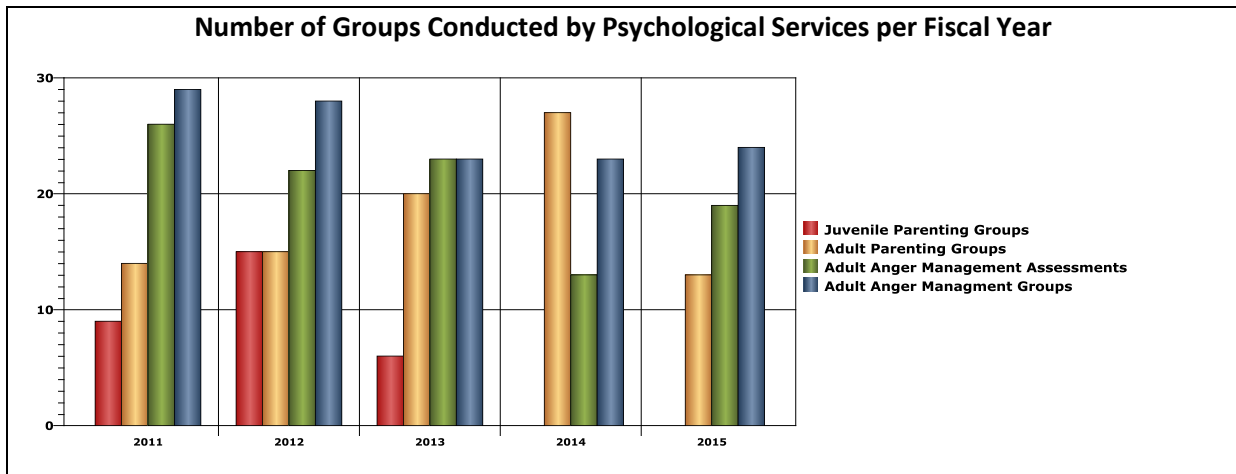
The Division’s licensed social worker provides Parenting Groups to individuals referred as a condition of the Court or from their Probation Officer. Parents are provided ongoing support, share ideas and information, and are taught the skills necessary for positive and effective parenting.

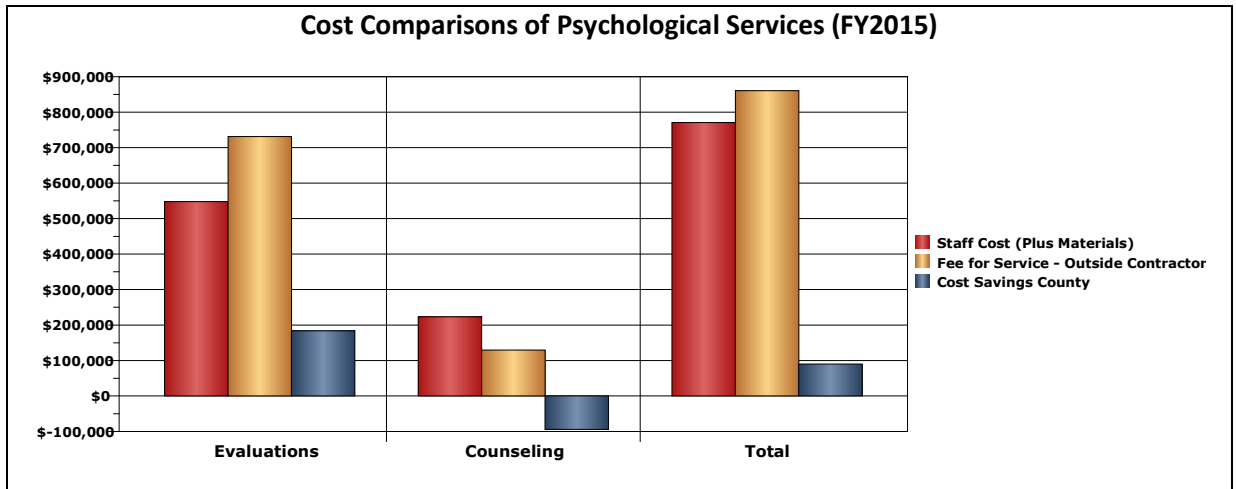
Anger Management Assessments

Anger management assessments are judicially driven therefore the Division’s licensed clinical social worker conducts anger management assessments upon individuals directly referred by the Court.

Anger Management Groups

A licensed clinical social worker within the Division of Psychological Services provides an anger management course to individuals that have been sentenced to Adult Probation or upon direct referral from the Court to undergo anger management training. This eight week course is offered to clients at the nominal fee of \$100 that is collected and deposited in the Court’s General Fund.





CONCLUSIONS

The Psychological Services Division was established in 1988 following a Lake County Court Services Division study recommending that "an in-house unit be created to provide diagnostic and treatment services to the adult and juvenile courts." Since that time the Psychological Services Division has expanded and evolved from a staff of 1 to 14 staff that are dedicated to providing the best diagnostic and treatment services to the Adult and Juvenile Courts.

Expansion of services included creating a position for a staff psychologist that is dedicated to the Specialty Courts, creating the fee for service program managed by the Division’s executive assistant, establishing clinicians certified by the Sex Offender Management Board to conduct comprehensive sex offender evaluations, establishing a collaboration with the Health Department for emergency psychiatric services, and expansion of the Division’s doctoral training program to include rotations with both Adult and Juvenile clients. The Division’s community resource liaisons in collaboration with the Health Department have been instrumental in registering Probation clients that qualify for Medicaid under the new Affordable Care Act.

Currently the Division of Psychological Services is expanding its role under SAMSHA’s Behavioral Health Treatment Court Collaborative grant by providing both resource and consultation services that includes training staff on Trauma-Informed Care. The continued growth of the Division is predicated on meeting the needs of the Court Organization and the mental health needs of its clients.